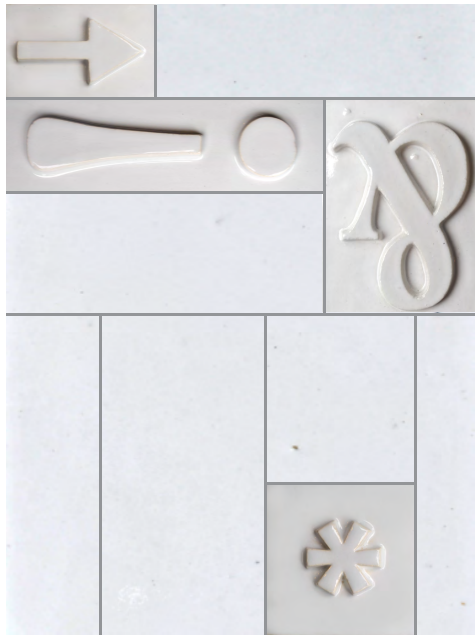




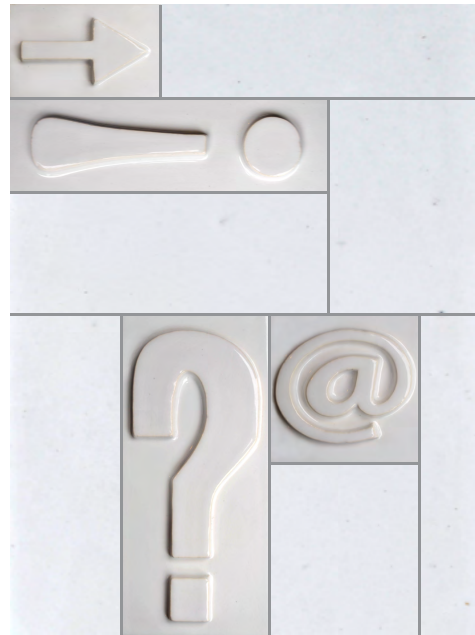
LETTERPRESS
BY ERIN ADAMS



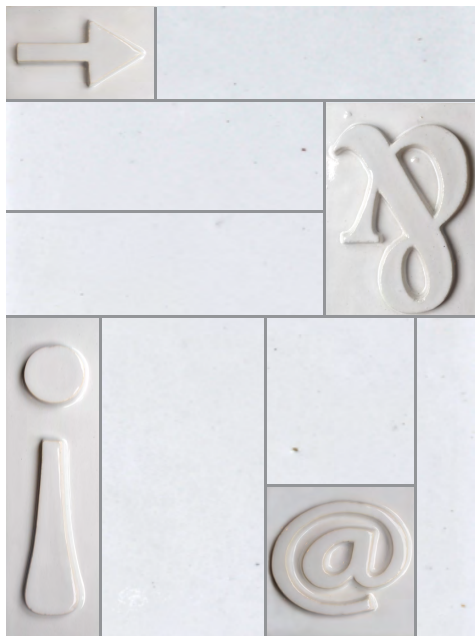
Part of the modular ceramic tile collection, Erin Adams has created a collection reminiscent of the old letter press printing block. These ceramic tiles will give any surface a subtle yet graphic punch



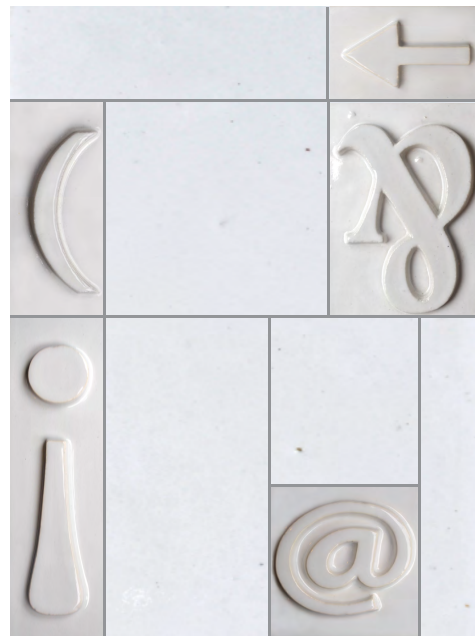
Pattern 1



Pattern 2



Pattern 3



Pattern 4

PATTERNS



Ampersand Symbol
5.75" x 4.25"



Bracket Symbol
5.75" x 2.75"



At Symbol
4.25" x 4.25"



Asterisk Symbol
4.25" x 4.25"



Exclamation Point
9" x 2.75"



Question Mark
9" x 4.25"



Arrow Symbol
4.25" x 2.75"

Field Tile:

Ampersand Field Tile: 4.25" x 5.75"

Square Field Tile: 4.25" x 4.25"

Small Rectangle Field Tile: 4.25" x 4.75"

Question Mark Field Tile: 4.25" x 9"

Exclamation Point Field Tile: 2.75" x 9"

Long Rectangle Field Tile: 1.75" x 5.75"

Small Field Tile: 1.25" x 4.25"

Large Rectangle Field Tile: 1.75" x 9"

Large Rectangle Field Tile: 1.25" x 9"

* Field Tile are on Patterns Page

TILES



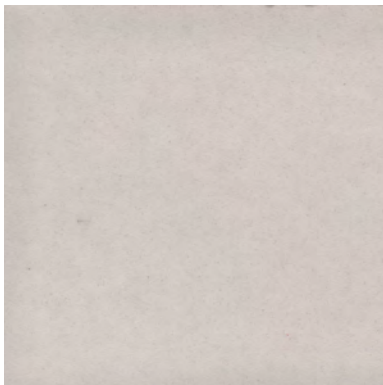
Crystal White



Linen



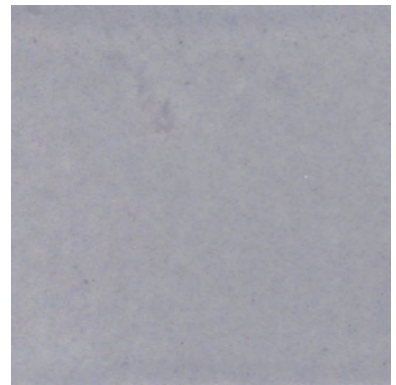
Pebbled Courtyard



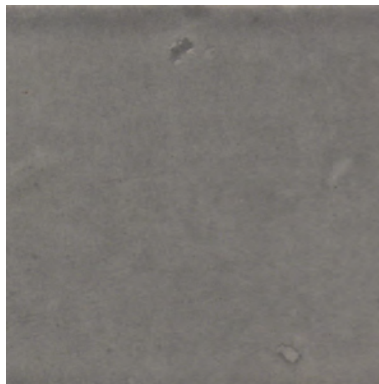
Ball Clay



Pearl Ash



Misty Morning



Cold Rolled

House Fifty Two

COLORS



House Fifty Two

HOUSE FIFTY TWO
2120 LAS PALMAS DR. SUITE G
CARLSBAD, CA 90211
(760) 476-3606
www.Housefiftytwo.com